

Diagnostic Software

Piaggio, Vespa, Gilera.

To correctly maintain any of the injected engines or the euro 3 Leader engine you must use the Piaggio Hand Held Diagnostic Tester (p.n. 020460Y)

The tester must have the correct software loaded for the engine you are working on. The software can be down loaded from the Piaggio Portal - After Sales - Download Software.

There are two types of downloads. Diagnostic programs and ECU mapping updates.

To down load software.

1. Log on to the Piaggio portal. (<http://uk.dealerarea.piaggio.com>)
2. On the main page select "After Sales" from the list on the left side.
3. Select "Download Software" from the options on the new window.
4. Double click the software you want from the drop down menu.
5. When the new window opens select the "Save" option and save it to a logical folder on your PC.

You must have the Tester Manager software loaded onto your PC.

Load the program from the CD supplied with "PC Cable Kit" p.n. 020469Y or;

1. Go to Piaggio Portal - After Sales - Download Software.
2. Click on "Diagnostic Tester Manage V1.07"
3. Click on "Instal Diag TPIaggio 1.07.00"
4. Select "Save" and then "Browse" to locate the folder you want to save the file to. Then "Save"
5. Open "Windows Explorer" and locate the file you saved to.
6. Double click the "Instal Diag TPIaggio 1.07.00" icon. Then click "Unzip"
7. You will get a message window to tell you the files have been unzipped successfully.
8. Go to the folder again and double click the file "Setup.exe"
9. Follow the on screen installation instructions.
10. When the installation is complete you should find a new icon "Sistema Diagnosi PIAGGIO" on the Desk Top.

Link your Tester to your PC

1. Connect your Hand Held Tester to your PC using the Serial cable supplied with "PC Cable Kit" p.n. 020469Y.
2. Use the mains unit supplied with "PC Cable Kit" p.n. 020469Y to power the Tester.
3. Press and hold "ESC" and "OK" then while you are holding them; plug in the mains unit.
4. Select "Link to PC" from the menu. Click "OK"

Open the Tester Manager program.

1. Double click the Tester Manager desk top icon
2. At the top left of the screen; select "Diagnosis" and then "Tester Software Management"
3. You will have a window with four panes.
4. The bottom right pane will show a list of the software already loaded onto the Hand Held Tester.

To load new software onto the Hand Held Tester.

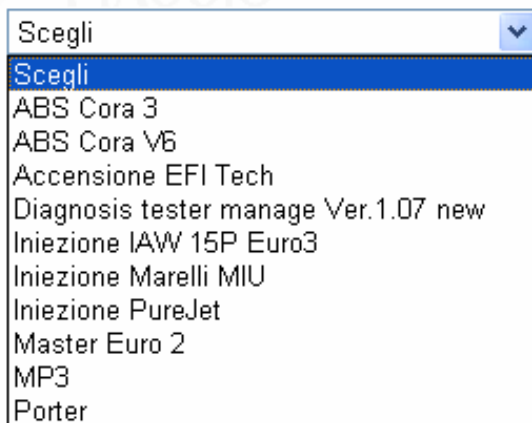
1. Click the “Install New Tester Software” button
2. A browser window opens; locate the software you want to install (from the folder you saved it in) and click “Install”.
3. The software will appear in the top left pane of the manager screen.
4. Click on the software name and it will then appear in the top right pane.
5. Click and drag the software from top right to bottom left pane.
6. Click the “Transfer to Tester” button.
7. A progress window will appear.
8. The new software will be added to the list in the bottom right pane.

You can load a maximum of five diagnostic programs onto the tester at anyone time. In addition to the diagnostic programs you can have mapping updates loaded

Which Software for which engine?

Here is the list of software downloads available from the Piaggio portal.

On the portal you will see this drop down list:



Note; If you were wondering; “Scegli” is Italian for “you choose”

This is what the software is used for:

Use	These are the descriptions that you will see on:			
	Portal When you have selected from the list	Tester Manager software "Vehicles"	Tester Manager software "ECUs"	Hand held tester
X9 ABS system - not UK market.	ABS Cora 3	ABS Cora 3	ABS Cora3 06-09-2004	n/a
GTS 250 ABS Diagnostic.	ABS Cora V6	ABS CORA V6M	ABS CORA V6M 17-06-2005	ABS CORA V6 M
Leader 125 euro 3 Diagnostic. (not injected) <small>See Note 3</small>	Accensione EFI Tech	EFI X2	DIAG EFI X2 22-09-2006	DIAGNOSI EFI X2
Manager software Load onto your PC. You must have this.	Diagnosis tester manage Ver.1.07	n/a	n/a	n/a
Master 500 euro 3 Master 400 Diagnostic <small>See Note 2</small>	Iniezione IAW 15P Euro3	15P EURO 3	INIEZ IAW 15P E3 UK 31-03-2006	INIEZ IAW 15P E3 UK
Quasar 250 injection engine. GTS, X8 etc	Iniezione Marelli MIU Quasar_250_UK.exe	Iniezione Marelli MIU	MARELLI MIU UK 01-68	MARELLI MIU UK 01-68
PureJet 50 Diagnostic.	Iniezione PureJet PureJetMY2002 Multilingue.exe	NRG 50cc PureJet MY2002	PureJet 50cc 2T MY2002 24-05-2002	PureJet 50cc 2T MY2002
PureJet 50 Standard mapping <small>See Note 1</small>	Iniezione PureJet Calibrazione DW FX per Purejet.exe	Calibrazione M1AECU	M1EPIDWAFX0 31-01-2003	M1EPIDWAFX0
Master 500 euro 2. Diagnostic.	Master Euro 2 Master Euro 2 Multilingue.exe	X9	IAW MARELLI X9 14-05-2001	X9 500cc IAW 15P E0
Original Master 500 Mapping. euro 1 & euro 2	Master Euro 2 applScarico1P0T F00 per Master Euro2.exe	applScarico 1P0T F00	applScarico 1P0T F00 21-03-2003	applScarico 1P0T F00
B 500 euro 2 Mapping update. <small>See Note 2</small>	Master Euro 2 Calibrazione Beverly 1P0ZB40.exe	BEVERLY	15P BEVERLY 1P0ZB40 23-02-2006	15P BEVERLY 1P0ZB40
Nexus 500 euro 2 Mapping update. <small>See Note 2</small>	Master Euro 2 Calibrazione Nexus 1P0ZN40.exe	NEXUS	15P NEXUS 1P0ZN40 10-04-2006	15P NEXUS 1P0ZN40
X9 500 euro 2 Mapping update. <small>See Note 2</small>	Master Euro 2 Calibrazione X9 1P0ZF40.exe	X9	15P X9 1P0ZF40 23-02-2006	15P X9 1P0ZF40
MP3 125 / 250 Tilt locking system. Diagnostic.	MP3 Standing Circuit_1_42	X2	DIAG X2 UK 26-09-2006	DIAGNOSI CeCA X2 UK
4 wheel van.	Porter	n/a	n/a	n/a

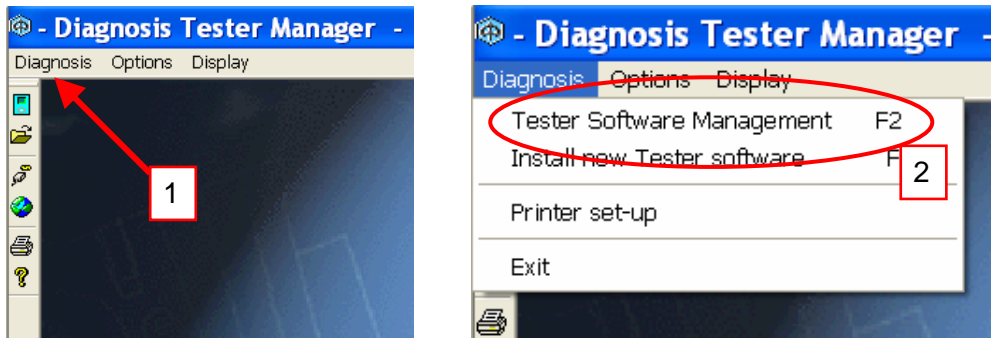
Notes

1. DW FY "racing" mapping is available for the Purejet, contact Piaggio Ltd.
2. Also use the Master euro 3 software for re-mapping euro 2 engines to the latest version. These are the 1P0**40 series of updates shown above. You can not use the euro 3 software for diagnostics on the euro 2 engine (only use it for re-mapping).
3. The manufacturer of the CDI is EFI Technology. EFI does not refer to electronic fuel injection.

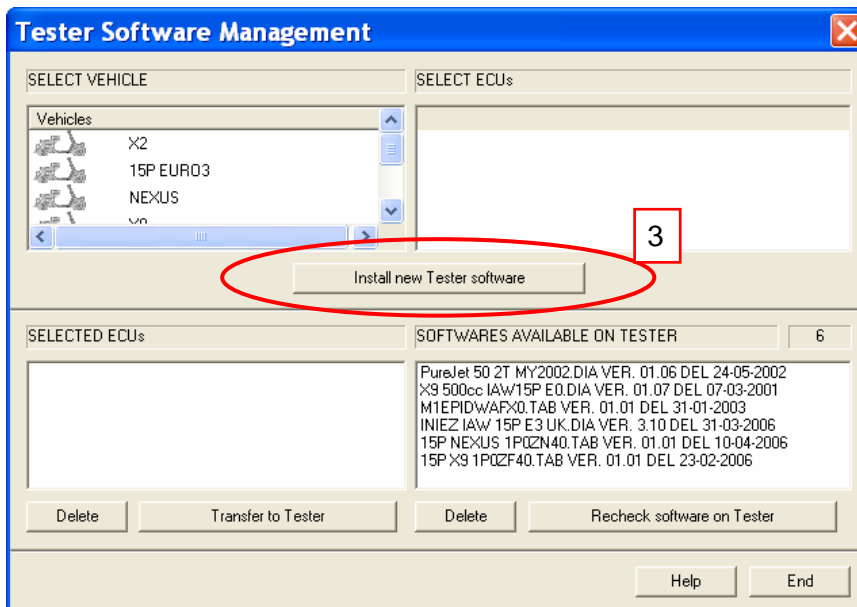
Loading new software onto the hand held tester.

Make sure your hand held tester is connected to your PC and turned on before you start.

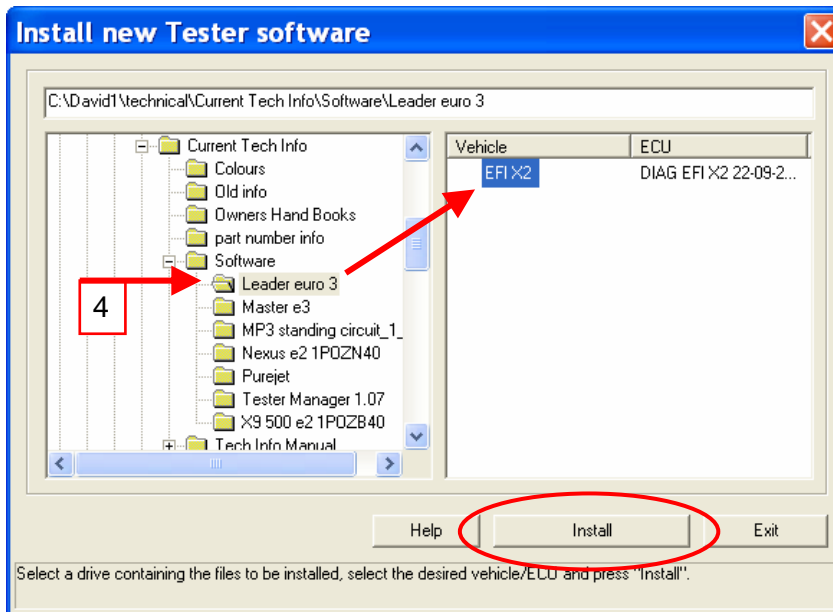
1. Open the "Diagnostic Tester Manger" program on your PC.
Click "Diagnosis" at the top left of the screen.
2. Select "Tester Software Management" from the drop down menu.



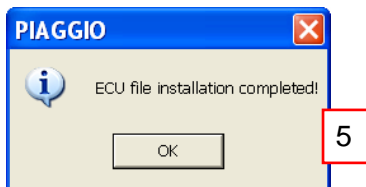
3. A window with four panes will appear.
The top left pane shows software available to be transferred to the tester.
If the software you want is not already available you must install it.
Click the "Install new Tester software" button.



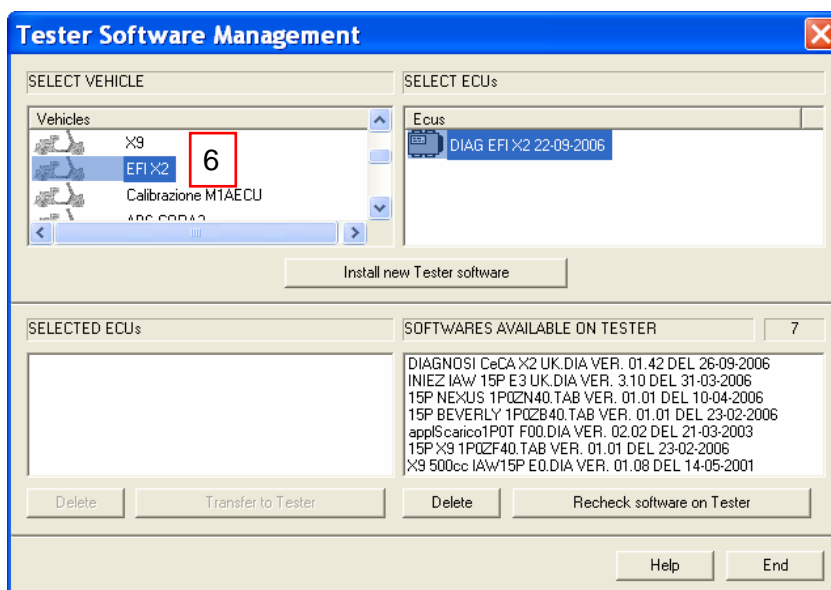
- A new window opens.
Locate the software you downloaded from the Piaggio Portal.
Select the software you want to install.
Click the "Install" button.



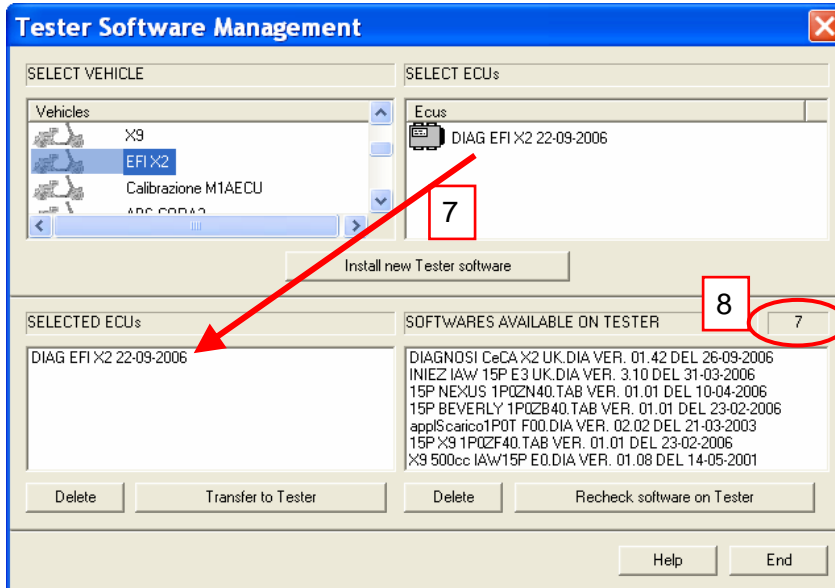
- When the installation is complete a message appears.
Click "OK"



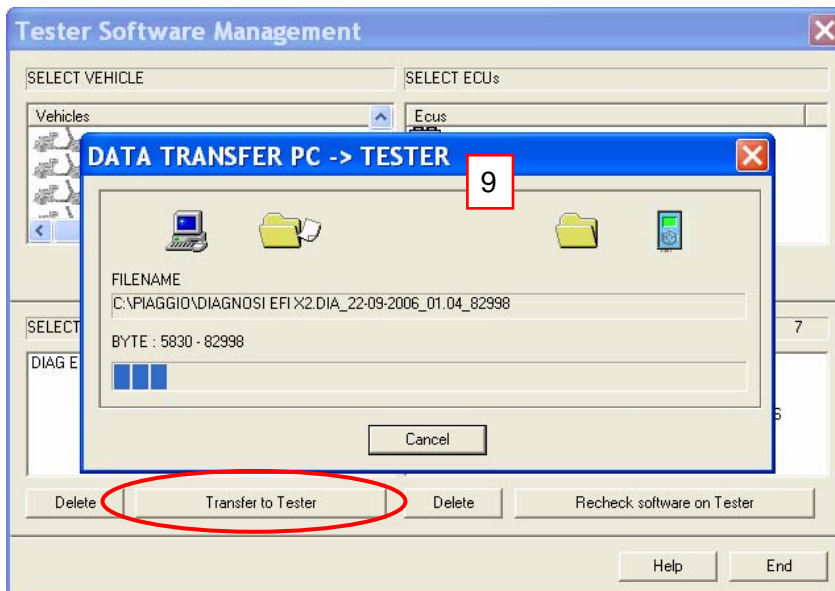
- Now the top left pane will include the software you want.
Select the software you want and it will appear in the top right pane.



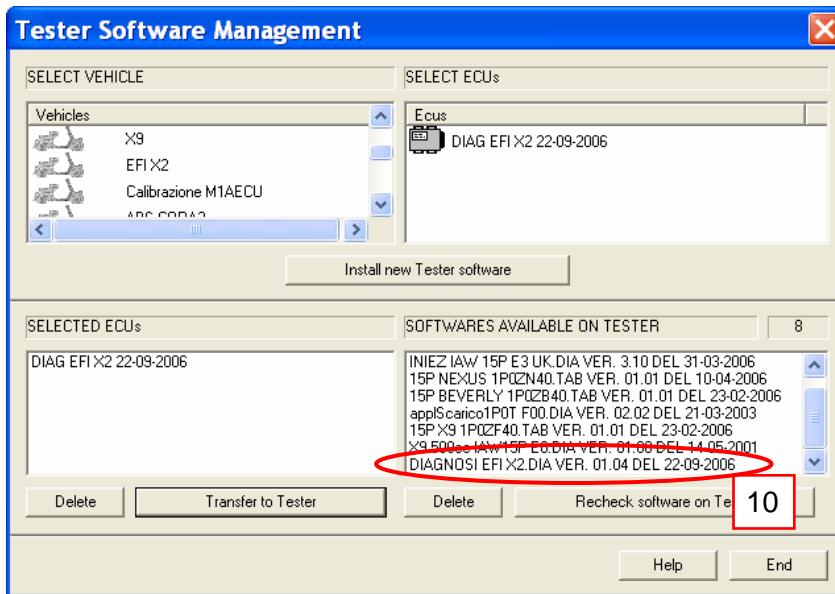
7. Click on the software in the top right pane and drag it to the bottom left pane.
8. The bottom right pane shows the software already loaded onto your hand held tester. In the example shown there are already seven items loaded. You can only access FIVE diagnostic items so we must check what the seven items are. The three items starting "15P" are mapping updates so we do not need to delete any. (If you need to delete any items select them and click the "Delete" button).



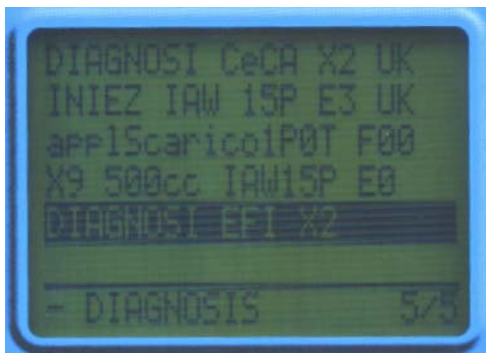
9. When you have less than five diagnostic items loaded then click the "Transfer to Tester" button. A progress window will appear.



10. When the transfer is complete the window will disappear and you will see the software is now included in the list.



11. You can now unplug the tester and begin using it on the vehicle.
Plug your tester into the vehicle.
Press and hold “ESC” & “OK” (the two left buttons).
While you hold the buttons connect the power supply.
Now you can release the buttons.
Select “ECU DIAGNOSIS” and click “OK”
(Notice that the tester only shows the five diagnostic programs)



Use the “UP” and “DOWN” buttons to select the program you require.
Click OK
Display shows “Module Loading”
When loading is complete the display shows software information. Click “OK”.

Loading updated mapping.

Some vehicles have updated mapping for their ECU available. (See the table above).
If you want to load updated mapping onto a vehicle; transfer the software to your hand held tester as normal.

Below I have chosen to update a older Nexus 500 (euro2).

The example below shows four items "Available on Tester"

Two are diagnostic programs

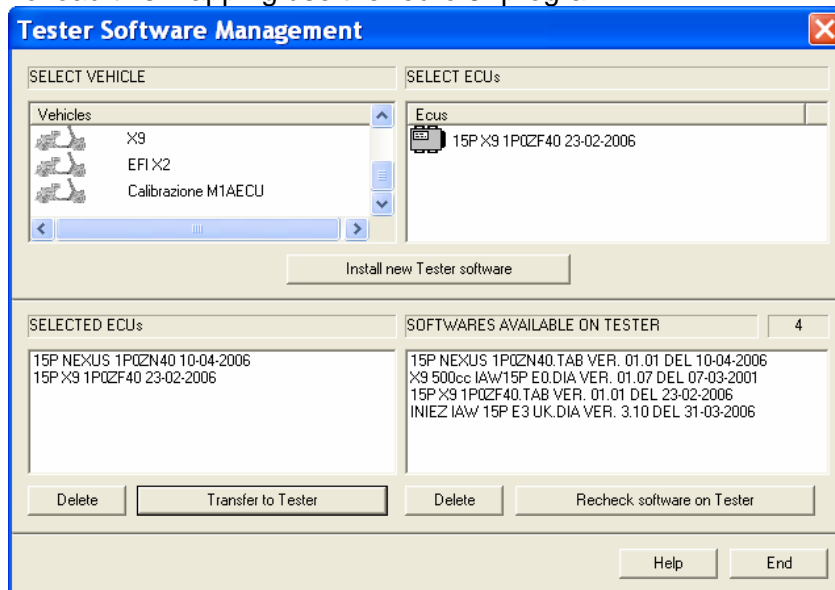
X9 500cc IAW 15P E0.DIA VER.0107 DEL 07-03-2001. Is original X9 500 program
INIEZ IAW 15P E3 UK DIA VER.3.10 DEL 31-03-2006. Is the euro 3 500 program

Two are ECU updates.

15P Nexus 1P0ZN40 TAB VER.01.01 DEL 10-04-2006
15P X9 1P0ZF40 TAB VER.01.01 DEL 23-02-2006

These are the latest ECU mapping for the euro 2 500cc engines.

To load this mapping use the "euro 3" program.



Plug your tester into the vehicle.

Press and hold "ESC" & "OK" (the two left buttons).

While you hold the buttons connect the power supply.

Now you can release the buttons.

Select "ECU DIAGNOSIS" from the menu and click "OK"

Use the "UP" and "DOWN" buttons to select "INIEZ IAW 15P E3 UK". Click OK

Display shows "Module Loading" and then the Piaggio logo. Click "OK"

The display shows software information. Click "OK".

Scroll through the options, select "CALIBRATIONS" and click "OK"

Select the model you want and click "OK"



Turn vehicle ignition on and click "OK". The software will be uploaded to the ECU.

Now turn off the tester (unplug the power).

You used the euro 3 software to upload the mapping but you must use the original (euro2) program for diagnosis.