

Vuelven las Balas Rojas

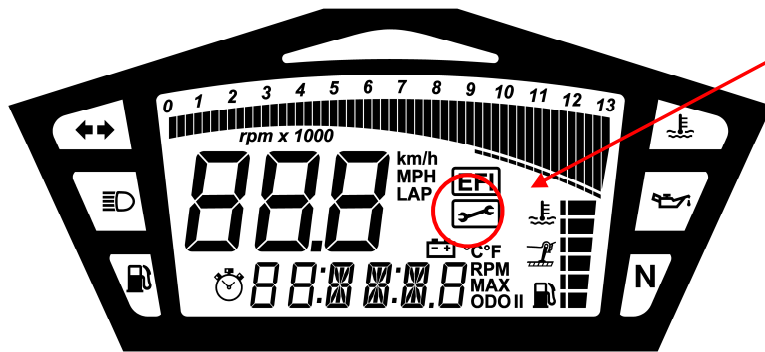
MODEL DERBI GPR 2009 DATE: 24/08/2009 CIRCULAR No 255.368

Resetting service indicator on GPR 50 2-stroke and GPR125 4-stroke 2009

Dear Dealer,

As advance information to the Workshop Manual, we would like to inform you that these machines (GPR 50 2-stroke and GPR 125 4-stroke) are fitted with a service indicator on the instrument panel. Instructions for resetting each of these are set out below.

1- Once the machine has travelled the distance set out on the table below, the system will activate the inspection function, which appears on the display in the form of the following icon:



2 – Service intervals

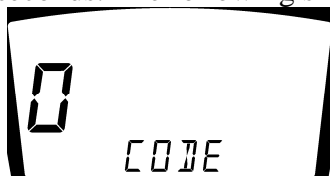
	GPR 125 4-stroke		GPR 50 2-stroke
First warning	1,000 km	First warning	1,000 km
Warning interval	6,000 km	Warning interval	5,000 km

4- Deactivating the service symbol:

First enter into configuration mode. To do so, enter a three figure code – in this case **423** – which will allow changing from kilometres to miles, service resetting, as well as resetting the odometer to zero on a once only basis and providing the machine has clocked less than 200 km.

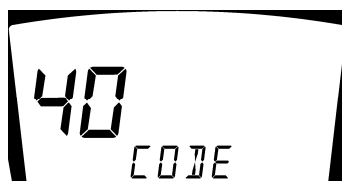
Vuelven las Balas Rojas

5- To access the described configuration, in the time interval between 1.5 and 4 seconds after switching on the ignition, press the MODE button (situated on the starter control) and hold down for at least 10 seconds. The following should appear:



6- The code 423 should now be entered.

The first figure will change from 0 to 9 one second at a time. When the figure arrives at the desired number (in the case of the example, 4), press MODE to save in memory:



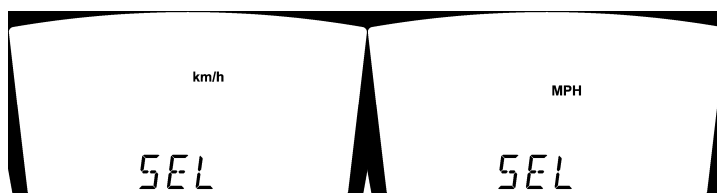
7- The second figure will begin to change (in this case, halt it when it reaches 2):



8- Do the same with the third figure (halt it when it reaches 3):



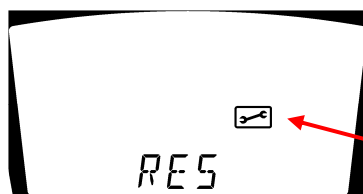
9- Immediately afterwards the configuration 423 will be displayed with the kilometre to miles changing function:



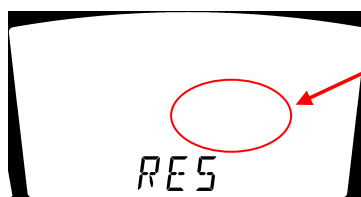
Vuelven las Balas Rojas

10- The change from kilometres to miles or vice versa is done by holding down the MODE button for over three seconds.

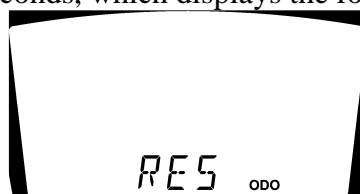
11- The following function is the one for resetting service/total km. To do so, pressing MODE briefly will display the following:



12- The icon with the spanner symbol will only appear when a service is overdue. To reset, press MODE for over three seconds and the icon will disappear:



13- The third function is resetting the odometer (this can be performed on a once only basis and providing the machine has clocked less than 200 km). This is done by pressing MODE for over 3 seconds, which displays the following:



All the configurations are saved when the ignition is switched off.

After-sales Service
Nacional Motor S.A.U-DERBI